



## Opton – The lighting tool for shop lighting

### Flexible and low-cost illumination for salesrooms

Opton is ideal for shop windows and salesrooms thanks to a particularly low height and a high luminous flux. ERCO achieves this with the intelligent positioning of control gear and luminaire head. The cast aluminium luminaire head ensures a long life thanks to sophisticated thermal management. In combination with efficient photometrics, Opton allows for highly economical and energy-efficient illumination. Variable distribution options further ensure flexible lighting solutions without com-

promising on the light quality. Opton – the ideal tool for shop lighting.



**Structure and characteristics**

The features described here are typical of products in this range. Special versions may offer additional or varying features. A comprehensive description of the features of individual products can be found on our website.

**1 ERCO Spherolit lens**

- Light distributions: narrow spot, spot, flood, wide flood, extra wide flood, oval flood or wallwash
- Oval flood adjustable through 90°

**2 ERCO LED-module**

- High-power LEDs: warm white (2700K or 3000K), neutral white (3500K or 4000K) or RGBW
- Collimating lens made of optical polymer
- RGBW with highly reflective colour mixer

**3 Light head**

- White (RAL9002), black or silver
- Cast aluminium, powder-coated
- 0°-90° tilt
- Frame: polymer, black

**4 Housing**

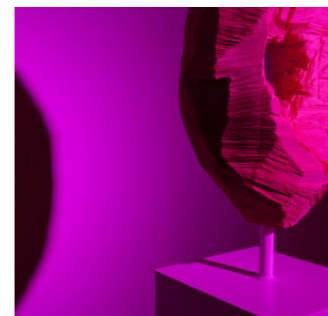
- White (RAL9002), black or silver
- Polymer
- Rotatable through 360° on adapter

**5 Control gear**

- Switchable, phase dimmable+On-board Dim, DALI dimmable or Casambi Bluetooth
- Phase dimmable + On-board Dim version: Dimming with external dimmers (trailing edge) possible and rotary control for brightness control on the luminaire

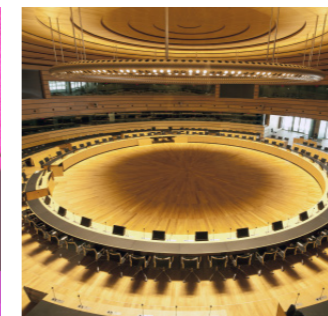
**6 ERCO 3-circuit adapter or ERCO DALI adapter**

**Variants on request**  
 - Housing: 10,000 further colours  
 Please contact your ERCO consultant.



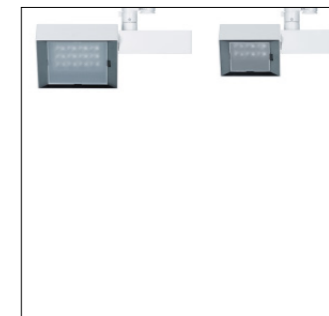
**Coloured light**

Using coloured light, the environment can be designed and transformed with either subtle or dramatic contrasts. LEDs enable you to generate coloured light very efficiently and flexibly.



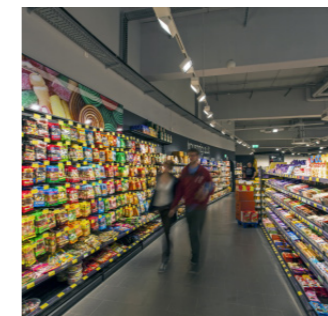
**Large lumen packages for very high illuminances**

The attention of the viewer can be focused via contrasting accents. ERCO has high-performance luminaires with large lumen packages in its range for this purpose.



**Small luminaire dimensions**

Small luminaires are discreet and place the focus on the light itself. Compact luminaire dimensions are particularly advantageous with small rooms.



**Very good price performance ratio**

The entry-level products offer an attractive price/performance ratio for lighting design tasks especially oriented towards cost-effectiveness. The luminaires of course meet high levels of energy efficiency and the basic requirements for visual comfort.



Design and application:  
[www.erco.com/opton](http://www.erco.com/opton)

**Special characteristics**

- Large lumen packages for very high illuminances
- Coloured light
- Small luminaire dimensions
- Very good price performance ratio

- ERCO high-power LEDs
- Efficient Spherolit technology
- Different light distributions
- Different light colours

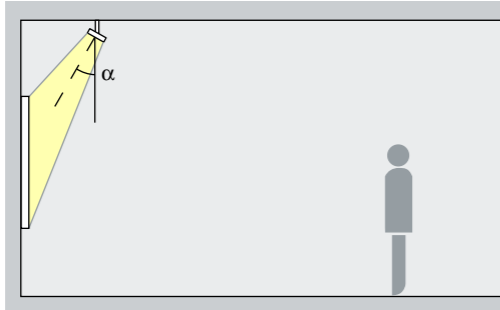
- Excellent thermal management
- EMC-optimised
- Various housing colours
- Various construction sizes
- Pivotable through 90°
- Accessory for maximum visual comfort

- Switchable
- Phase dimmable + On-board Dim
- DALI dimmable
- Casambi Bluetooth

## Opton for track 220-240V – Luminaire arrangement

### Spotlights

Narrow spot, Spot, Flood



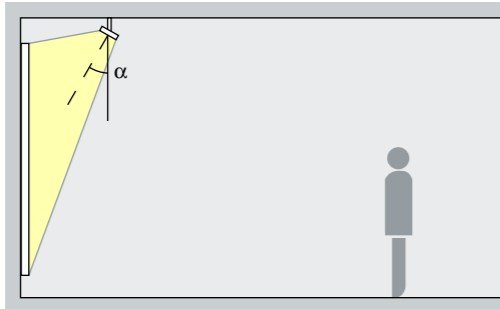
### Accentuation

Opton spotlights accentuate artwork, products and architectural details effectively. The ideal angle of tilt ( $\alpha$ ) for this is around  $30^\circ$ . The object is modelled without distorting the effect as a result of excessive shadowing. It also prevents shadows cast by the observer.

Arrangement:  $\alpha = 30^\circ$

### Floodlights

Wide flood, Extra wide flood, Oval flood



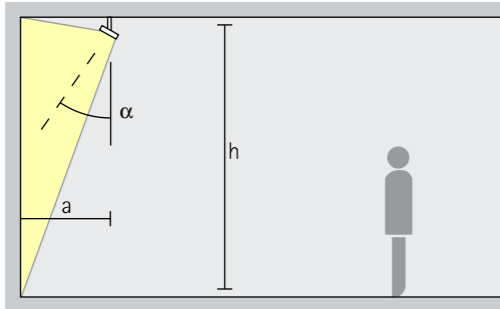
### Washlighting

The ideal angle of tilt ( $\alpha$ ) for floodlighting objects with a long, square shape, e.g. pictures, sculptures or merchandise displays, is around  $30^\circ$ .

Arrangement:  $\alpha = 30^\circ$

### Lens washers

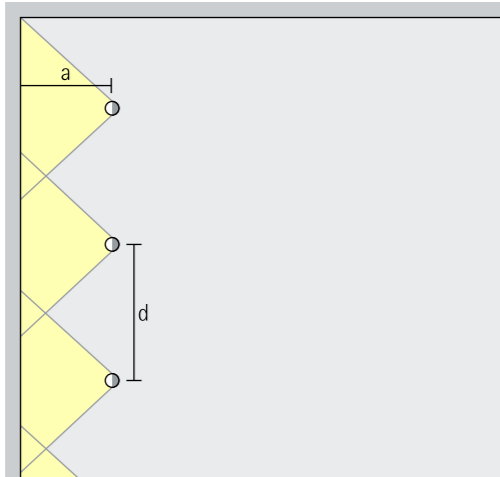
Wallwash



### Wallwashing

For uniform vertical illuminance, the distance (a) of Opton lens washers from the wall should be around one third of the room height (h). This results in an angle of tilt ( $\alpha$ ) of approx.  $35^\circ$ .

Arrangement:  $a = 1/3 \times h$  or  $\alpha = 35^\circ$



For good longitudinal uniformity, the spacing (d) of Opton lens washers may be up to 1.2 times the offset from the wall (a).

Arrangement:  $d \leq 1.2 \times a$

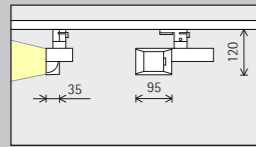
The optimal wall offset and luminaire spacing for each product are indicated in the wallwasher tables in the catalogue and the product data sheets.

Chimei Museum, Tainan. Architecture: Y.C.Tsai Architect & Associates. Interior design: U-Joint Design Construction Co. Ltd.. Lighting design: Chou Lien, Ray Chen (OLDC), Electrical engineering: EAK Engineering Consultants & Technology Co., Ltd.. Photography: Jackie Chan, Sydney.



# Opton for track 220-240V

Construction size 95mm



LED module  
Maximum value  
at 4000K CRI 82

6W/825lm	2W/275lm (Narrow spot)
10W/1230lm	3W/410lm (Narrow spot)

Light colour

	2700K CRI 92		3500K CRI 92
	3000K CRI 92		4000K CRI 82
	3000K CRI 97		4000K CRI 92

Light distribution

Spotlights	Floodlights
Narrow spot	Wide flood
Spot	Extra wide flood
Flood	Oval flood
Lens wallwashers	
Wallwash	

Control

	Switchable		DALI
	Phase dimmable + On-board Dim		Casambi Bluetooth

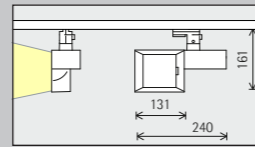
Colour (housing)

	White		Silver
	Black		10,000 colours *

Accessories

	Lenses
	Snoots

Construction size 131mm



12W/1650lm	8W/1100lm (Narrow spot)
19W/2460lm	13W/1640lm (Narrow spot)

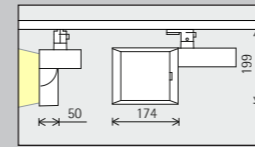
	2700K CRI 92		3500K CRI 92
	3000K CRI 92		4000K CRI 82
	3000K CRI 97		4000K CRI 92

Spotlights	Floodlights
Narrow spot	Wide flood
Spot	Extra wide flood
Flood	Oval flood
Lens wallwashers	
Wallwash	

	Switchable		DALI
	Phase dimmable + On-board Dim		Casambi Bluetooth

	White		Silver
	Black		10,000 colours *

Construction size 174mm



24W/3300lm	18W/2475lm (Narrow spot)
38W/4920lm	28W/3690lm (Narrow spot)

	2700K CRI 92		3500K CRI 92
	3000K CRI 92		4000K CRI 82
	3000K CRI 97		4000K CRI 92

Spotlights	Floodlights
Narrow spot	Wide flood
Spot	Extra wide flood
Flood	Oval flood
Lens wallwashers	
Wallwash	

	Switchable		DALI
	Phase dimmable + On-board Dim		Casambi Bluetooth

	White		Silver
	Black		10,000 colours *

30W/1900lm
------------

	RGBW
--	------

Spotlights	Floodlights
Spot	Wide flood
Flood	Extra wide flood
Lens wallwashers	Oval flood
Wallwash	

	DALI
--	------

	White		Silver
	Black		10,000 colours *

\* available on request

Article numbers and planning data:  
[www.erco.com/012238](http://www.erco.com/012238)

Design and application:  
[www.erco.com/opton](http://www.erco.com/opton)

