

COMFORT ADJUSTABLE PEDESTAL AK 5/8

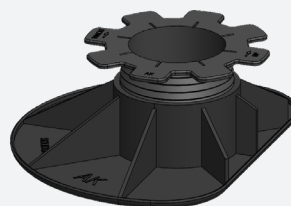
TECHNICAL DATASHEET

SPECIFICATIONS

With this pedestal, you can provide a finish to your terrace on our adjustable pedestals with only a small part of the product remaining visible. This finish is possible in one step and is adjustable by means of the screw clamping system.

Using the AK pedestals helps you place tiles perfectly stable against the wall. Consists of two parts and is placed at the edges of a terrace. The bottom part has eight vertical reinforcement ribs. The top piece has eight blocking ribs.

Color	Black
Support area	300 cm ² 46,50 in ²
Outside diameter	164/215 mm 6,46/8,46 inch
Weight	188 g/piece
Adjustable height	50 - 80 mm 1,97 - 3,15 inch



Recycled material



Weatherproof



Resistant to temperatures between -25 and +70°C



PP compound



Compliant with the DTU standard 43.1 and 51.4



Capacity: 2.400 kg/m²



Tested on Roof T4 and BFL-S1

OTHER AK-PEDESTAL



AK 3.5/5

OTHER PEDESTALS



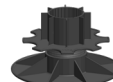
PV 2.3/3.5



PV 8/11



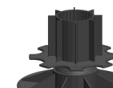
PV 3.5/5



PV 11/14



PV 5/8



PV 14/17

TOP PLATES

For tiles



C2/4T



Sticksol
For wood



C3/4T



CPV+



C6/4T



Other

CO

ACCESSORIES

Extension piece



F30



AF100

Slope corrector



HS2



HA5

Fitting pieces



1 - 3 mm

PACKAGING

Bag

Dimensions	1.450 x 750 mm 57,09 x 29,53 inch
Gross weight	10 kg
Quantity	50 pieces/bag

Pallet

Dimensions	1.200 x 1.100 x 2.000 mm 47,24 x 43,31 x 78,74 inch
Gross weight	216 kg
Quantity	20 bags/pallet - 1.000 pieces



COMFORT ADJUSTABLE PEDESTAL AK 5/8

TECHNICAL DATASHEET

LOAD/M²

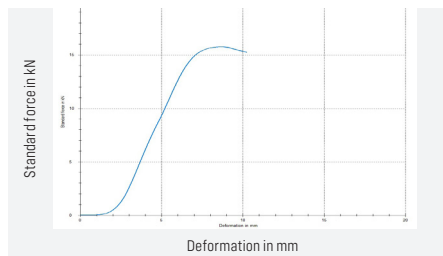
Every 600 mm l/w	1.350 kg/m ²
Every 500 mm l/w	2.400 kg/m ²
Every 400 mm l/w	3.750 kg/m ²

Tiles

600 x 600 mm (2,25 pcs/m ²)	1.350 kg/m ²
500 x 500 mm (4,00 pcs/m ²)	2.400 kg/m ²
400 x 400 mm (6,25 pcs/m ²)	3.750 kg/m ²

DRUKTEST (ZWICK)

1.560 kg



Discover here how sustainable our assortment is:



Calculation valid with correct placement and use without extension pieces. For higher construction with extension piece, these results are not valid. Minimum 1.5 threads must still be threaded into the base piece.



Made in Belgium