

For Rent – Workshop with Offices – 250 m² – Evere/Haren

→ Available from July 2025

Looking for a workspace for your project?

We're opening up a bright, ground-floor unit at our 14,000 m² site—home to Rotor(DC) and a mix of studios with makers working in the circular economy, local production, and the arts.

Interested? Get in touch to arrange a visit!

Description

- **Address:** Avenue de Bâle 3, 1140 Evere
- **Type:** Workshop + Offices
- **Total Surface Area:** 250 m²
 - **Offices:** 93 m²
- **Ceiling Height:** 3.5 m
- **Condition:** Rented empty (flexible layout based on needs)
- **Urban Status:** Urban industrial zones (see PRAS)

Layout:

- Workshop and storage spaces
- Offices
- Meeting room
- Basic kitchen
- Private restrooms
- Loading/unloading zone
- Outdoor terrace and shared garden

Facilities:

- Heating (office and kitchen area)
- Wifi connection (optional)

Accessibility:

- Near Bordet train station
- Public transport: tram lines 55 and 62, bus lines 12, 65, 21, 59, 64, 69, 80
- Plenty of free street parking
- On-site bicycle parking

RotorDC

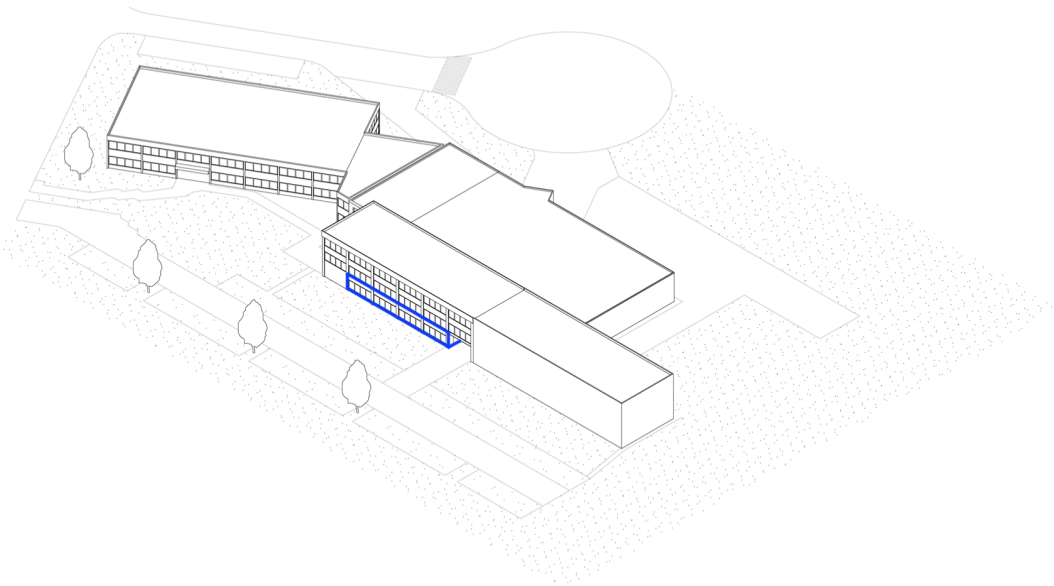
Rental Conditions:

- **Rent:** €2,290/month (includes property tax and common charges)
- **Estimated private charges:**
 - Electricity: based on submeter readings
 - Heating: approx. €200/month (adjustable depending on usage)
 - Water: approx. €40/month
- **Deposit:** 2 months' rent
- **Lease Duration:** To be agreed (minimum 1 year preferred)
- **Site redevelopment planned for 2027** (schedule being finalized)

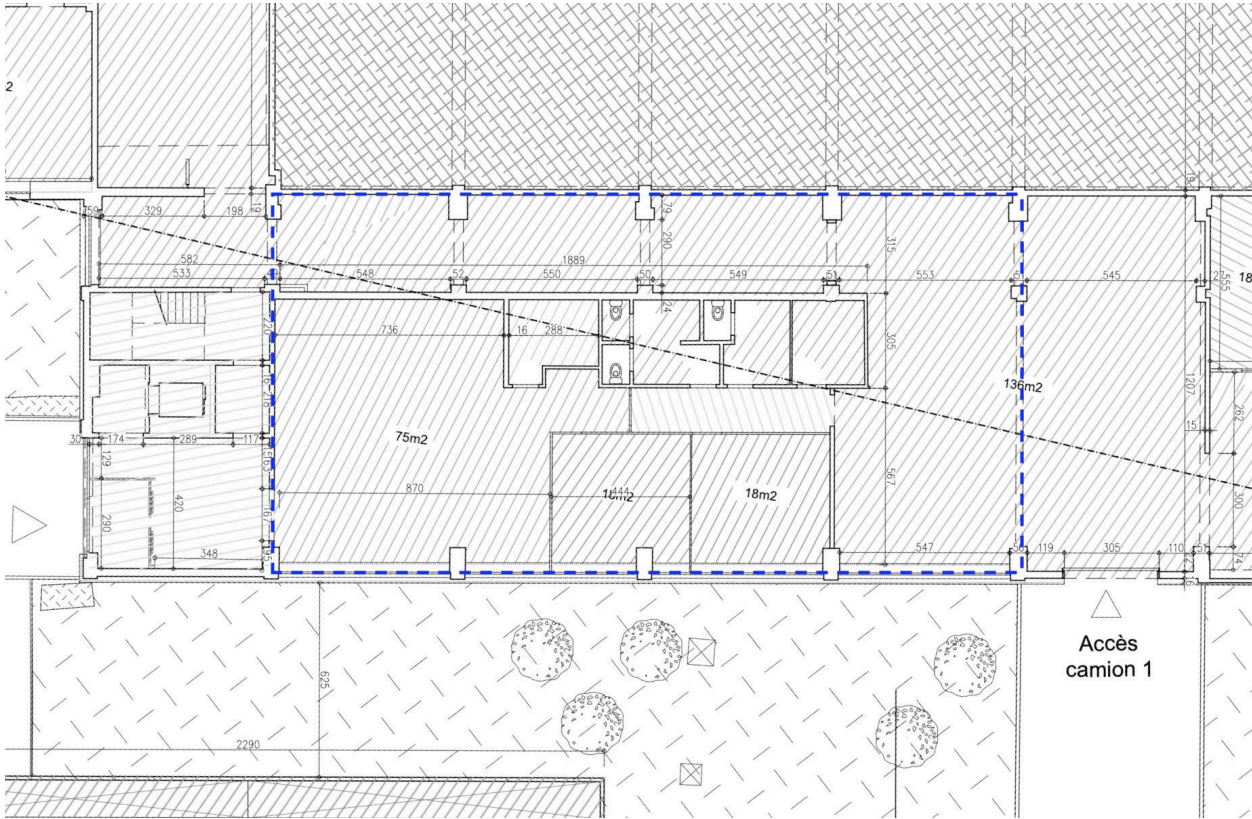
Contact

- victoriavankan@rotordc.com

Plan



RotorDC



Photos



RotorDC

